

SHOP **TALK**

**JAN 1 - FEB 28
2023**



BUMPER
TO
BUMPER



1987 Buick Grand National

Mike Standley
Thayer, MO

**BUMPER
TO
BUMPER**

Auto Parts Specialists

BTBAUTOPARTS.COM



TURBOCHARGED VEHICLE SALES ARE BOOMING. DORMAN IS YOUR ONE-STOP SHOP FOR MUST HAVE REPAIR PARTS.

Replacing or servicing a turbocharger can be a messy business, and a thorough, professional job requires replacing worn and failure-prone hoses, oil lines, clamps, sensors, and other hard-to-find parts. Make Dorman your single source for turbo accessories to ensure a proper, complete fix the first time.

FEATURED TURBOCHARGER ACCESSORIES



667-300
Cold Side Intercooler
Pipe Kit

\$209⁰⁰



667-534
Turbocharger Boost
Solenoid

\$49⁰⁰



904-254
Exhaust Down Pipe
V-Band Clamp

\$69⁰⁰



SCAN NOW

to learn more about
Dorman turbocharger accessories

(DOR) **DORMAN**®

WHAT'S NEW CAM/CRANK SENSORS



No One Tests Like We Do

OUR 48-HOUR VIBRATION TEST ENSURES DURABILITY

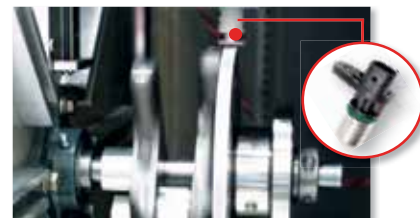
Sensors undergo 48-64 hour vibration testing across three different planes to ensure a long service life under the harshest conditions

OUR CHAMBER TESTING ENSURES PERFORMANCE

Chamber testing cycles from -40°F to 257°F to ensure optimal operation in extreme temperatures

WHAT OUR TESTING MEANS FOR YOU

Standard® cam / crank sensors protect against short circuits and over, under, and reverse voltage to deliver precision performance and a long service life under all operating conditions



Quality Designed. Quality Built.

Matching connectors and tin-plated brass terminals ensure accurate, watertight connection to harness

High-strength neodymium magnets ensure proper signal voltage to the ECM

Factory-installed grommets and wire clips ensure proper mounting during installation

Protective sleeve prevents wires from chafing and creating short circuits

Integrated A/D converter and digital signal processing with dynamically adaptive switch point improves accuracy and operation

Intermotor® PC133
Honda/Acura (2002-96)

See Store For Pricing!

1000+
SKUs

More than 1000 SKUs and
95% coverage for domestic and
import applications



All cam and crank sensors
undergo extensive testing to
ensure durability



As an expert manufacturer,
you know what to expect
every time you open our box

EXPLORE THE STANDARD® ADVANTAGE | STANDARDCRANKSHAFTSENSORS.COM

ELECTRONIC POWER ASSISTED STEERING

VISION-OE®

The Undeniable Future of Power Steering

COVERAGE FOR
OVER 3 MILLION
VEHICLES



For more information please visit www.bbbind.com/epas101

EPAS AVAILABLE TO ORDER TODAY!

**BUMPER
TO
BUMPER**
Auto Parts Specialists

Continental
BATTERIES
Powering Your World

(CON)

MOTOBATT
GURDFLEX™ TECHNOLOGY

**PRE-FILLED
PRE-CHARGED**

**READY FOR
THE SUMMER**

**HIGH POWERED AGM
POWERSPORT BATTERIES**



\$89⁰⁰
MBTX12U



\$109⁰⁰
MBTX16U



\$109⁰⁰
MBTX20U



\$139⁰⁰
MBTX30U



TECH PLUS TIRE BALANCING COMPOUND

(TEC)



TL200

6.5 OZ.

\$675

TL250

8.5 OZ.

\$825

TM300

10 1/2 OZ.

\$1075

How Tech Plus Works

Thousands of specially coated microbeads reduce friction and maintain durability, giving you the option of reinstalling TECH PLUS in a retreaded truck tire for trailer applications.



TECH PLUS microbeads are spread evenly around interior of the tire through centrifugal force.



A tire with a heavy spot on the tread pulls the tire outwards, causing a force that results in vibration.

TECH PLUS microbeads are redistributed around the tire, creating compensating force and reducing vibration.



BEAM BLADES BY BOSCH

**See
Stores
For
Pricing!**

- Precision-tensioned steel spring applies uniform pressure along the entire blade length
- Aerodynamic wind spoiler improves airflow, creates down force and protects tension spring from snow and ice buildup
- Graphite-treated natural rubber wiping edge for reduced friction and noise

Dupli-Color® (DPL)

Premium Truck Bed Coating

Textured, solvent-based coating ideal for providing protection for truck beds and all other automotive metal, aluminum, fiberglass and wood surfaces. The high-output delivery system makes application fast and easy and gives you precision and control.



**TR350
150Z.**

\$2495

Professional Rubberized Undercoat and Sound Eliminator

Flexible and the rubberized coating creates an effective sound barrier and reduces vibration. Protects metal surfaces from corrosion and moisture.

**UC102
17 OZ.**

\$1295





5050
\$829



(PAF)

Parts Master 50/50 Pre-Diluted Antifreeze & Coolant 50/50

is a conventional (green) ethylene glycol based antifreeze for automotive and light-duty diesel applications. It is designed to provide maximum protection against freezing & overheating. It contains inhibitors that are specially formulated to protect all engine metals, including aluminum, against rust & corrosion. There is no need to add water

Parts Master Antifreeze & Coolant

is a conventional (green) ethylene glycol based antifreeze for automotive and light duty diesel applications. Parts Master Antifreeze & Coolant is designed to provide maximum protection against overheating. It contains inhibitors that are specially formulated to protect all engines metals, including aluminum, against rust & corrosion



003
\$1269



(RAD)

Thrust® Starting Fluid

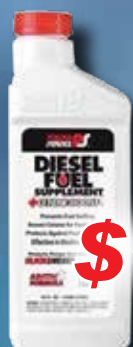
- Quickly starts gas engines
- Contains upper cylinder lubricants
- Effective to -65°F

M38-15

\$499 ea.



Diesel Fuel Supplement



01026-12
32oz.

\$1195 ea.



01064-06
64oz.

\$1995 ea.



(PSP)

Diesel Kleen Fuel Injector Cleaner with Cetane Boost



03026-12
32oz.

\$1395 ea.

Clear Diesel Fuel and Tank Cleaner



09226-12
32oz.

\$1695 ea.



03064-06
64oz.

\$2395 ea.



08025
32fl. oz

\$1195





LIMITED EDITION 2235TiMAX-CAMO 1 1/2" IMPACT

Everything you know and love about the 2235TiMAX is coming to you in limited edition MOSSY OAK® Camo. This tool is for all those who work hard and play hard!

- 1350 ft-lbs. of Nut Busting Torque
- Finely tuned twin-hammer impact mechanism
- Lightweight, balanced, air impact wrench that weighs just 4.6lbs
- Titanium hammer case designed to be strong and durable
- 4-Position power regulator and one-handed forward/reverse push button control

2235TiMAX-CAMO

\$199⁰⁰



25219 23218
PUMICE SMOOTH

25219

**Your
Choice**

\$16⁹⁵



23122
15 oz
Smooth

\$3⁹⁵



**Boosted Quality.
Boosted Coverage.**



**PUTTING THE
POWER
IN YOUR HANDS!**



**HIGH-PERFORMANCE
TURBOCHARGERS**



**PRECISELY
CALIBRATED**

JOB IN A BOX*

Items included* to help get the job done right!



GASKETS | O-RINGS | TROUBLESHOOTING MATRIX |
PRE-INSTALL & INSTALLATION INSTRUCTIONS |
PRE-LUBE OIL SYRINGE

*included with Class 1-3 applications



AeroVantage®

(ANC)

CLEAR WIPE AT ANY SPEED™

The premium upgrade conventional blade replacement.



KWIKCONNECT®

Provides quick and easy wiper blade replacement



AEROVENT™

Aerodynamic vented bridge maintains wipe at highway speed



DURAKLEAR® PLUS

Exclusive, advanced rubber compound provides a consistent streak-free wipe

**All Lengths
Your Choice**

\$8⁹⁵_{ea.}

**97 Series
12" - 28"**

Learn more about the ANCO family of quality wiper blades at www.ancowipers.com

**DON'T BREAK IT.
BREAK IT IN.**

Gates® G-FORCE™



FOLLOW THE NEW CVT BELT
INSTALLATION AND BREAK-IN
PROCESS AT GATES.COM/BREAKIN

upol

(UPL)

RAPTOR

TOUGH AND TINTABLE
PROTECTIVE COATING



RAPTOR Black Truck Bed Liner Kit

UV Resistant - Will not fade. Scratch and stain resistant. Helps deaden sounds and vibrations. Rapid drying - Spray 2nd coat within an hour. High adhesion.

Flexible. **UP0820G**

\$199⁰⁰

UP0821G

\$199⁰⁰



RAPTOR Tintable Truck Bed Liner Kit

4 Liter Tintable 2.6 VOC Compliant Kit; RAPTOR Tough Protective Coating is a durable urethane coating that provides surfaces with a protective barrier that can withstand the toughest situations. Use for automotive, construction, marine, and commercial applications. Each kit contains four 750ml bottles of RAPTOR and one 1L tin of hardener. Each kit covers approximately 125 square feet, enough to do a full size pick-up truck bed.



UP0726

\$25⁰⁰

Gravitex Plus And Raptor Spray Gun

Spray gun for GRAVITEX PLUS and RAPTOR. High performance auto-motive refinishing spray gun

#RAPTORIZE YOUR RIDE IN COLOR!

RAPTOR Color is a concentrated tint for use with RAPTOR Tintable Protective Coating. Mix RAPTOR Color with RAPTOR Tintable Base to give a rich, UV resistant color that won't fade even after years in the sun. Available in a wide range of colors, choose either a single color or use different colors to create your own multi-colored, custom look.

**PICK
A COLOR
\$25⁰⁰**

UP4854 WHITE / BLANCO 2K*	UP4857 BEIGE / BEIGE 2K*	UP4860 BLUE / AZUL 2K*	UP4863 GREEN / VERDE 2K*	UP4866 YELLOW / AMARILLO 2K*
UP4855 LIGHT GRAY / GRIS CLARO 2K*	UP4858 LIGHT BROWN / MARRÓN CLARO 2K*	UP4861 NAVY BLUE / AZUL MARINO 2K*	UP4864 PINE GREEN / VERDE PINO 2K*	UP4867 ORANGE / NARANJA 2K*
UP4856 BASALT GRAY / GRIS BASALTO 2K*	UP4859 SEPIA BROWN / MARRÓN SEPIA 2K*	UP4862 LIGHT GREEN / VERDE CLARO 2K*	UP4865 OLIVE GREEN / VERDE OLIVA 2K*	UP4868 FLAME RED / ROJO FUEGO 2K*



(JOE)



704KW-S
25 CT.

704KW
70 COUNT
(shown)

\$9⁹⁵ **\$17⁹⁵**

Joe's Hand and Surface Quick Wipes

Joe's Hand and Surface Quick Wipes are a double sided towel that gives you an abrasive side for more aggressive cleaning and a smooth side for quick clean up. Designed to trap soil in the fibers, these wipes are the perfect partner for our line of Joe's Hand Cleaners for removal of paint, grease, ink, adhesives, sealants, and epoxy—to name a few. These wipes are also ideal for clean-up of tools, parts, and even work benches. They have a pleasant cherry scent.

neapco



Complete Balanced
PTO Assemblies
and Protective
Shield Kits



Optimal for propane and fuel delivery industry.

Manufacturing Driveline Solutions® in the USA Since 1921.

PRO-LOGIX – PROTECT YOUR CHARGE. (SLR)

OUTSTANDING BATTERY MAINTENANCE



PL2112

- 12V, 1A Operation
- Flooded, AGM, Spiral and LiFePO4 batteries
- 3 output options
- Overcomes power outages

BENEFICIAL BATTERY CHARGING



PL2310

- 6/12V, 10/6/2A Operation
- Flooded, AGM, Spiral and Deep Cycle batteries
- 0-10A 12V Power Supply Mode
- Charges total dead (0.0V) batteries



PL2320

- 6/12V, 20/10/2A Operation
- Flooded, AGM, Spiral and Deep Cycle batteries
- 0-12A 12V Power Supply Mode
- Charges total dead (0.0V) batteries

VERSATILE WHEEL CHARGER

PL3760



12/24V OPERATION

ENGINE START

COMMERCIAL GRADE

- 12/24V 60/40/10/250A Operation
- Flooded, AGM, Spiral and Deep Cycle batteries
- 12V engine starting assistance mode
- 12V and 24V stable power modes

POWER OUTPUT

12V CHARGING	60/40/10A
12V STABLE POWER MODE	0-60A ON DEMAND
12V ENGINE START	250A
24V CHARGING	20/10A
24V STABLE POWER MODE	0-20A ON DEMAND

CHARGING WITH ENGINE START



PL2545

- 12V, 20/10/2A Operation
- Flooded, AGM, Spiral and Deep Cycle batteries
- Charges total dead (0.0V) batteries
- Engine starting assistance mode

24V PORTABLE CHARGING



PL2410

- 12/24V, 10/6/2A Operation
- Flooded, AGM, Spiral and Deep Cycle batteries
- Charges total dead (0.0V) batteries
- Enhanced maintenance mode



W30501

\$109⁰⁰



134 pc Mechanic's Tool Set

- Features high torque, quick release, 72 gear teeth ratchets that allow for a 5 degree sweep
- 6pt SAE and Metric standard and deep wall sockets in 1/4 and 3/8" drive sizes
- Chrome vanadium alloy steel for strength and durability
- Contents: (6) Drive tools: 1/4" spinner handle, 3" x 1/4" Dr. extension, 3" x 3/8" Dr. extension, 1/4, 3/8" Dr. 72T Ratchets, 1/4" Dr. bit coupler (24) 1/4" Dr. sockets: 4, 4.5, 5, 5.5, 6, 7, 8, 9, 10, 11, 12, 13, 14mm, 5/32, 3/16, 7/32, 1/4, 9/32, 5/16, 11/32, 3/8, 7/16, 1/2, 9/16" (20) 1/4" Dr. deep wall sockets: 4, 5, 6, 7, 8, 9, 10, 11, 12, 13mm, 5/32, 3/16, 7/32, 1/4, 9/32, 5/16, 11/32, 3/8, 7/16, 1/2" (25) 3/8" Dr. sockets: 6, 7, 8, 9, 10, 11, 12, 13, 14, 15, 16, 17, 18, 19mm, 1/4, 5/16, 3/8, 7/16, 1/2, 9/16, 5/8, 11/16, 3/4, 13/16, 7/8" (10) 3/8" Dr. deep wall sockets: 9, 10, 12, 13mm, 5/16, 3/8, 7/16, 1/2, 9/16", 5/8" SP socket, (16) Hex Keys: 1.5, 2, 2.5, 3, 4, 5, 5.5, 6mm; 1/16, 5/64, 3/32, 1/8, 5/32, 3/16, 7/32, 1/4", (33) 1/4" Hex 1" CrV bits: #0, #1, #2 & #3 Phillips; 1/8, 3/16, 1/4" Slotted, PZ1, PZ2, PZ3 Pozi; S1, S2, S3 Square; 3/32, 1/8, 5/32, 3/16, 7/32, 1/4", 2.5, 3, 4, 5, 5.5, & 6mm Hex

LED Pen Light

- Super Bright Nichia LED never needs replacing
- Requires 3AAA batteries (included)
- Specs: 72 Lumens, 4.5 hour run time, 1333cd beam intensity, 73m beam distance



W2356

\$6⁹⁵
ea.

TIMKEN
Stronger. By Design.



Bumper To Bumper has over 1000 Timken Ag sku's available on the Timken Ag Program! Please check for stock and availability at your Local Store!

EVERYTHING GETS OLD. EVEN YOUR SHOCKS.



CHANGE YOUR WORN SHOCKS AT 50,000 MILES.*

*Actual mileage may vary depending upon driver ability, vehicle type, and the type of driving and road conditions.



(PST)

AF3000
\$13⁹⁹
EACH

OR
\$81⁰⁰
PER CASE(6)

**Prime®
All Vehicle**

Prime antifreeze+coolant (concentrate) is for all vehicles; & fluid colors. The extended life formula is safe for use with all types of metals & rubbers; including aluminum. Prestone Prime will guard against temperature extremes and the effects of rust, corrosion and premature water pump failure.



(LIN)

**20V Powerluber
Cordless Grease Gun,
Double Battery
features:**

- Electronically controlled two-speed design
- Comfortable over-molded grip
- Multi-function LCD identifies grease output and loss of prime

Kit Includes:

- Cordless grease gun
- (2) Slide-on Rechargeable batteries
- Charger
- Heavy-duty carrying case



1884

\$389⁰⁰



(GOJ)

Cherry Gel Pumice Hand Cleaner

Contains a unique combination of skin conditioners and is pH balanced for skin comfort. While its pumice scrubbers make cleaning hands quick and easy, Gojo Cherry Gel Pumice Hand Cleaner leaves skin feeling refreshed. It's pleasant Cherry Fragrance eliminates soil odors and leaves hands smelling clean!

10.

2356

\$18⁹⁵





(PLM)



V701KC-2
\$379⁰⁰

701 Great White[®] LED 7" PAR 56 Round Headlight

- Form factor matches standard 2D1 configuration.
- Replaces standard 7" incandescent sealed beam.
- Standard H4 electrical connection.
- V701KC-2 includes: (2) 701C 7" LED Headlights and (2) 701-491 anti-flicker harnesses
- Requires 701-491 anti-flicker harness for use on CANBUS-equipped vehicles, including '07 and newer Jeep Wrangler.
- Low Beam 1100 Lumens;
- High Beam 1650 Lumens.



(CEN)

STUBBY DRILL BIT SET

17905

\$229⁵

FEATURES

- 3/32" (0.0938) Drill Bit, Oal 1-3/8", Cutting Length 1/2"
- 1/8" (0.1250) Drill Bit, Oal 1-5/8", Cutting Length 3/4"
- 3/16" (0.1875) Drill Bit, Oal 1-15/16", Cutting Length 1.00"
- 1/4" (0.2500) Drill Bit, Oal 1-15/16", Cutting Length 1-1/4"
- 5/16" (0.3125) Drill Bit, Oal 2", Cutting Length 1-1/4"



1332
 32oz.

\$145⁰

TIRE SEAL - R

(BER)

1301
 1Gal.

\$39⁰⁰



REACH

CONDENSERS

RADIATORS

HEATER CORES



REACH manufactures the highest quality cooling parts in the industry!
SEE YOUR LOCAL BUMPER TO BUMPER STORE FOR APPLICATION AND PRICING!



THREE CAUSES OF FUEL PUMP FAILURE

We explore the three most common causes of fuel pump failures.

The fuel pump is responsible for delivering fuel from the gas tank to the engine. A seemingly simple task that can easily be compromised when outside issues affect the performance of the pump.

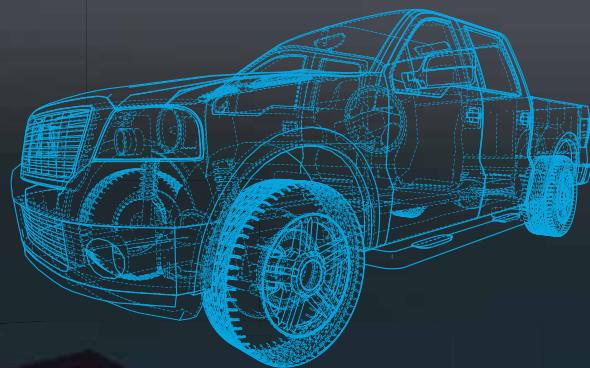
THE THREE MOST COMMON CAUSES OF FUEL PUMP FAILURE INCLUDE:

- 1. Fuel Contamination:** Fuel is jeopardized from corrosion, debris and moisture, which can all bring visible contaminants into the tank.
- 2. Clogged strainers/filters:** The aforementioned contaminants eventually clog critical components including strainers, filters and the fuel pump itself. This blockage ultimately impairs the flow of fuel, which may affect the vehicle during acceleration, among other long-term impairments.
- 3. Electrical issues:** Electrical faults are also significant contributors to fuel pump failures. The most common electrical issues are rusted connectors, loose connectors, or melted wiring and connectors. To help identify issues of poor electrical connections, a high quality digital volt/ohm/meter should be used to test for voltage drops and continuity.



MacPherson

M A C P H E R S O N R I D E™



Complete Wheel Hub Assemblies Available Now!

WE BRING IT ALL TOGETHER

With industry leading application coverage and engineered product enhancements, MacPherson Hub assemblies meet the demands of professional installers.

BETTER VALUE:

MacPherson Hub Assemblies are designed and manufactured to maximize durability, reduce noise and extend service life.

LESS LABOR:

Installation-ready hub assemblies include everything in the box to get the job done.

BETTER RIDE:

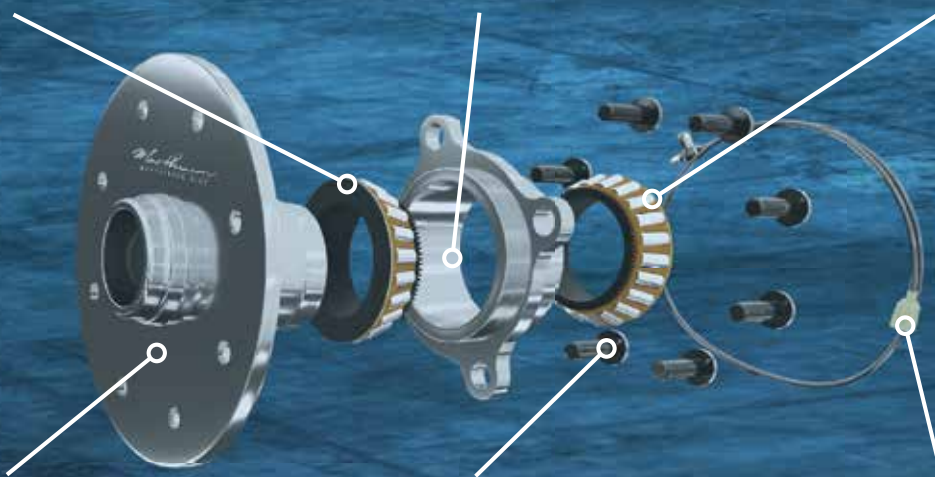
Premium materials and manufacturing processes eliminate noise associated with bearing vibration providing a smooth quiet ride.



High-temp grease protects internal components and reduces noise

Induction hardened, micro-finished races improve durability and load capacity

Precision matched bearings reduce run out and noise while improving ride quality



Enhanced steel alloys improve load bearing capabilities and durability

Premium wheel studs & hardware are included for easy installation

Improved harness quality increases strength and resistance to thermal fatigue

MYPLACE4PARTS
FIND THE RIGHT PARTS FAST



LESS TIME CLICKING.
MORE TIME FOR FIXING.



powered by:



MOOG® Complete Pre-Assembled Steering Linkage

(MOG)

For Dodge Rams - Easy to Install, Saves Time

The MOOG® Complete Pre-Assembled Steering Linkage for Dodge Ram trucks is a complete, easy-to-install product that saves time by eliminating the need to identify, source and assemble all the individual parts required. Just as important, this MOOG steering linkage features premium quality materials that provide strength and durability for long-lasting performance and alignment – reducing tire wear and improving steering.

This component is designed as a direct steering linkage replacement for 2009-2013 Dodge Ram 2500/3500 trucks.

The MOOG pre-assembled steering linkage includes:

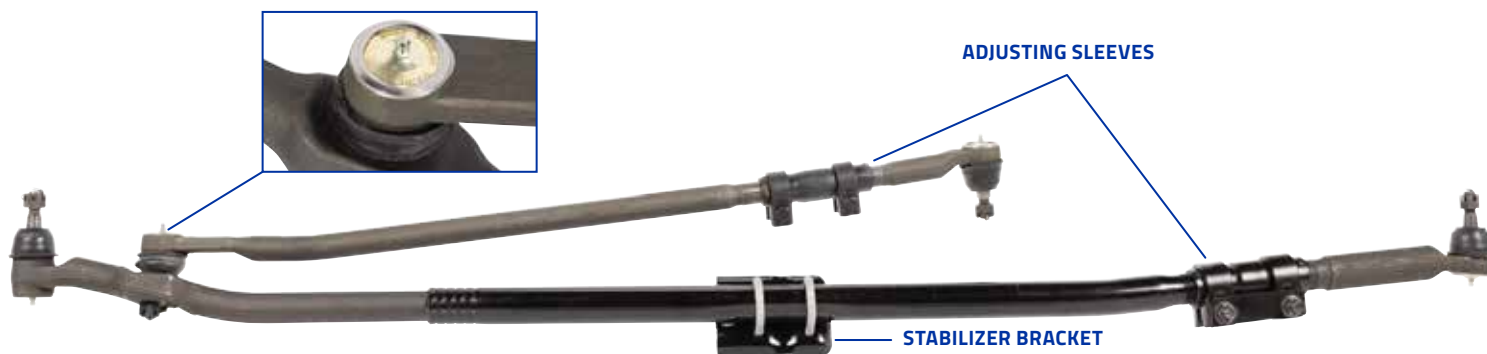
All necessary MOOG Tie Rod Ends, which feature:

- MOOG Problem Solver® gusher bearing technology and greaseable design.
- MOOG patented pressed-in cover plate design and Belleville washer, ensuring proper preload and consistent socket torque for the life of the part.

STEERING LINKAGE

Part # DS800981A

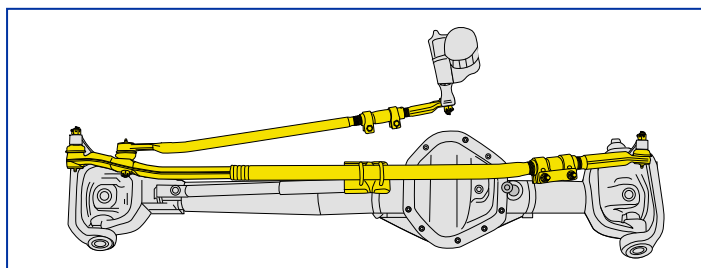
Year	Make/Model
2009-2013	Dodge Ram 2500/3500 4x2, 4x4



DS800981A

\$375⁰⁰

Part # DS800981A



Premium components come pre-assembled for quick and easy installation. Simply install the complete linkage and set the alignment.

See Stores For All Applications!

MOOG

Go the extra mile.™



(SLI)

TIRE SEALANT

1 GAL.
10163
\$42⁹⁵
ea.

24OZ.
10008
\$11⁹⁵
ea.



(BER)



Brake Cleaner

19 OZ.
1420

\$6⁷⁵
ea.

Or

\$75⁰⁰
Case(12)



Injector Cleaner Fuel Treatment

- Pour-in Long-Neck Bottle Capless Tank Compatible
- Contains detergents and high-energy solvent technology

1112
12oz.

\$375

Or

\$42⁰⁰
Case(12)



(MYS)

14oz. Tubes,
10PACK

54385

\$51⁰⁰



JT-6[®] Hi-Temp Grease No. 2

Hi-Temp Grease is an extremely versatile performer that is highly recommended for disc brake wheel bearings and is specifically approved for use in universal joints.

14oz. Tubes,
10PACK

54845

\$42⁵⁰



JT-6[®] Multipurpose #2 Grease

This product is a medium temperature range multipurpose grease for extreme pressure loads and slow to medium speed bearings.

JT-8[®] Synthetic Blend Oil

13002
2 Gal.
15W-40
(shown)

12892
2 Gal.
15W-50

Your
Choice!
\$43⁰⁰



EASY TO USE FLEXFILL™ POUCH

Makes Synthetic Gear Oil Changes Easier Than Ever

Gear oil changes don't have to be a hassle. Our FlexFill™ pouch works in tight spaces, resulting in less waste.

Why FlexFill™ ?

- FlexFill™ works in tight spaces and makes gear oil easier to use than ever
- Squeezable pouch allows for less waste and easier application

Why Valvoline Gear Oil?

- Full Synthetic; for exceptional high and low temperature protection
- Extreme Pressure Additive; for better load carrying capacity and wear protection
- Excellent Thermal Stability; designed to protect oil from high temperature breakdown
- Anti-foam Agent; quickly breaks down foam for better lubrication
- Contains Limited Slip Additive; excellent friction modifier for optimal performance of the clutch pack

ONLY AVAILABLE FROM VALVOLINE,
THE #1 BRAND IN GEAR OIL



(VMO)

889785
75W-90
1 QUART

\$13⁰⁰

889787
75W-140
1 QUART

\$17⁰⁰

This \$#! works!

That's what you tell us. Why?
Because it works. Try it!!!

Safe, effective, fast. K-Seal® is compatible with all automobiles, HD trucks, tractors, RVs and buses.

- It **permanently** seals virtually all coolant leaks including heads, head gasket failures, cracked blocks, radiators, heater cores - even water pumps.
- It requires **no draining or flushing**. Add directly to the cooling system whether you're on the highway, in the yard.
- For just a few dollars K-Seal® will keep you on the road.
- Works on aluminum heads.

(KSL)



**SAFE FOR USE
WITH ALL
COOLING SYSTEMS
SHAKE POUR
AND GO**

Just wanted to say thank you. It fixed a 2000 Monte Carlo head gasket leak and a Volvo S70 heater core leak. Unbelievable that in one day \$40 worth of K-Seal fixed two vehicles! K-Seal saved my ass!"

**16 fl.oz.
ST5516**

\$22⁹⁹

**8 fl.oz.
ST5501**

\$13⁹⁹

**16 fl.oz.
ST3501**

\$26⁹⁹

**Pick Up Your K-Seal Today At
Your Local Bumper To Bumper Stores!**

EXTEND THE LIFE OF YOUR CALIPERS

Upgrade to PerfectStop®
E-Coat Brake Calipers
TODAY!

PERFECTSTOP®

Perfect Stop® E-Coat Brake Calipers



Armor-Plate™ electrodeposition coating ensures complete protection for the caliper and its critical surfaces, such as inside the caliper bracket bores

DESIGNED TO PREVENT CORROSION



(LUC)

CYLINDER LUBRICANT & INJECTOR CLEANER

- Lucas Fuel Treatment cleans and lubricates valves, pumps, carburetors, injectors and compression rings.
- For gasoline and diesel fuel
- Does not contain alcohol, solvents, kerosene, diesel fuel or anything else that would be useless or harmful to engines

FOR TWO! 10020 5.25oz.
\$10.00



Specialty Formulated For Use In All European Vehicles

Peak original equipment technology antifreeze + coolant is specifically designed for European vehicles requiring a violet coolant, and is formulated with the same silicate-enhanced organic acid technology that protected your vehicle straight from the factory. It is free of phosphate, borate, nitrite and amines, and will provide excellent protection against rust and corrosion to all cooling system metals, including aluminum.

PEVOB3
 EUROPEAN VIOLET
\$19.75



PEBOB3 EUROPEAN BLUE
\$19.75

PEPOB3 EUROPEAN PINK
\$19.75



Specialty Formulated For Use In All Asian Vehicles

Peak original equipment technology antifreeze + coolant is specifically designed for Asian vehicles requiring a green coolant, and is formulated with the same phosphate-enhanced organic acid technology that protected your vehicle straight from the factory. It is free of silicate, borate, nitrite and amines, and will provide excellent protection against rust and corrosion to all cooling system metals, including aluminum.



PAGOB3
 ASIAN GREEN



PAROB3
 ASIAN RED



PABOB3
 ASIAN BLUE

\$19.75 **\$19.75** **\$19.75**



(PAF)

Extended Life Concentrate Antifreeze & Coolant



PMA0Q3

\$12.99



(PAF)

PEAK GLOBAL LIFETIME® Antifreeze & Coolant

EL003
 1 Gal.

\$16.49

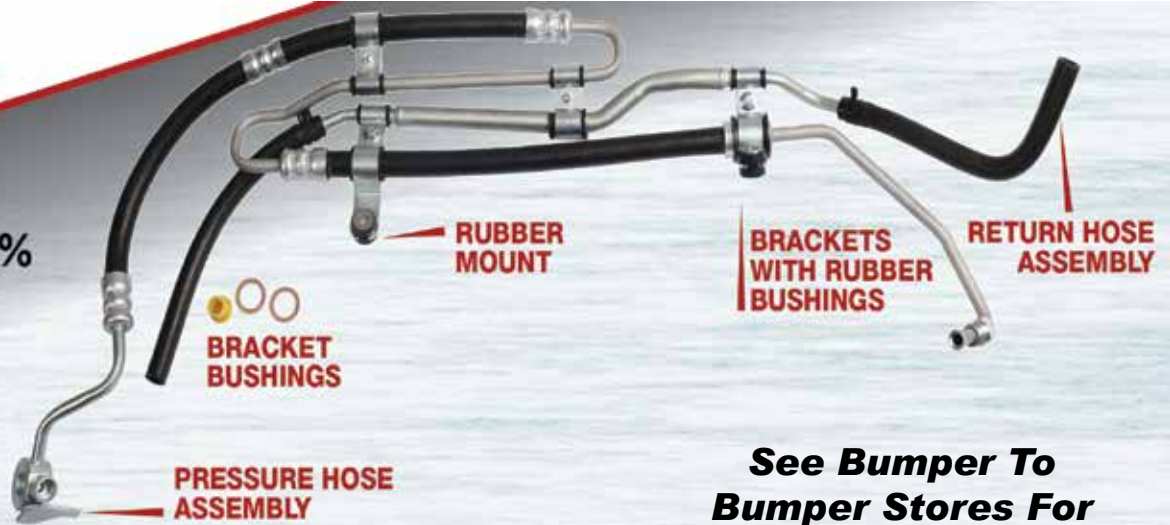


EL5050
 1Gal.

\$10.99

SUNSONG®

**SAVE UP TO 20%
LABOR TIME!**



Problem: Typical aftermarket parts require the installer to pull the pressure and return hose assembly from the vehicle, take the assembly apart and re-assemble the new hoses with rusty brackets and worn bushings.

Solution: With Sunsong pre-assembled pressure and return hoses you simply disconnect each hose end, unthread the bolts that attach the brackets to the vehicle, and remove the pressure and return assembly as one complete unit. Then re-install the new complete assembly. No need to reuse worn bushings or remove rusty brackets from the pressure and return hose and transfer them to the replacement hoses.

**See Bumper To
Bumper Stores For
Application & Pricing.**

**Excellence
Under Pressure!**

**PRE-ASSEMBLED POWER STEERING
PRESSURE & RETURN HOSE ASSEMBLIES**



(LUB)

**594321
1 GAL.**

\$16⁹⁵



Bar and Chain Lubricants

- **A high tack content that stays on chain under severe cutting**
- **A lubricating film to maximize chain and bar life**
- **Resistance to sling off at highest speeds**
- **Penetration and coating of metal surfaces to prevent rust**

Howes 'Diesel Treat' Diesel Conditioner and Anti-Gel

- Prevents diesel fuel from gelling.
- Safely removes water from diesel fuel.
- Contains no alcohol or other harmful solvents.
- Increases power and fuel economy.
- Cleans and lubricates fuel injectors.
- Eliminates smoking and rough idle.
- Free Tow Guarantee!
- Safe and effective in all diesel and biodiesel blends to B-20.
- Particulate filter friendly and warranty safe.



(HOW)

**103062
1 QT.**

\$12⁷⁵



**103060
1/2 GAL.**

\$18⁹⁵





ABS SENSORS

- Perfect Stop ABS Sensors offer superior coverage for Domestic as well as Asian and European Import Vehicle Applications
- Over 2,300 SKU's covering 93% of the North American market
- All Sensors are manufactured to meet or exceed the OE part for Quality and Fitment
- 3 Year / 36,000 Mile Warranty on Perfect Stop ABS Sensors

BRAKE WEAR SENSORS

- Perfect Stop brake wear sensors are manufactured utilizing the highest-quality reinforced plastics withstanding temps up to 400°C
- With more than 300 part numbers covering over 99% of applications throughout North America, Perfect Stop is sure to have the sensor you need when you need it
- 3 Year / 36,000 Mile Warranty on Perfect Stop Brake Wear Sensors



VEHICLE SPEED SENSORS

- Perfect Stop vehicle speed sensors offer superior coverage for Domestic as well as Asian and European Import Vehicle Applications with over 170 SKU's
- High-quality reinforced plastic housing for superior resistance to the elements
- All Sensors are manufactured to meet or exceed the OE part for Quality and Fitment
- 3 Year / 36,000 Mile Warranty on Perfect Stop Sensors

INSIDE SEALING

GM 6.6L DURAMAX DIESEL EDITION SIMPLIFYING HEAD GASKET SELECTION

APPLICATIONS:

Chevrolet/GMC ¾- and 1-Ton Trucks & Vans
6.6L 402 OHV V8 Turbo-Diesel 103mm Bore

PROBLEM: COMPLAINTS RELATED TO REPLACEMENT HEAD GASKETS

Developed in partnership by General Motors and Isuzu, the GM 6.6L Duramax turbo diesel is one of the most popular, powerful and reliable engines for a broad range of medium-duty applications. It can also be a time-consuming and somewhat risky challenge for engine repair professionals, who face a confusing array of engine variations and production head gasket designs.



The OE manufacturer supplies five different Cyl. Head Gasket grades: A, B, C, Block Over-Bored, Block Over-Bored and Deck Milled. To identify each, the OE uses a "Hole" & "Slot" system as illustrated below.

Fel-Pro Engineers have designed two grades (.037" and .047" Thick) to function in place of the five offered by OE. The new Fel-Pro PermaTorqueMLS Cyl. Head Gasket part numbers are ink stamped to identify their coverage corresponding to OE.

OE GRADES:	A	B	C	Block Over-Bored	Block Over-Bored and Deck Milled
Old Fel-Pro Part No's:	26249PT (LH) 26276PT (RH) 26268PT1 (LH) 26269PT1 (RH)	26271PT (LH) 26272PT (RH) 26271PT1 (LH) 26272PT1 (RH)	26273PT (LH) 26274PT (RH) 26273PT1 (LH) 26274PT1 (RH)	N/A	N/A
New Fel-Pro PermaTorqueMLS Part No's:	26401PT (LH) 26402PT (RH) .037" Thick	26401PT (LH) 26402PT (RH) .037" Thick	26401PT (LH) 26402PT (RH) .037" Thick	26405PT (LH) 26406PT (RH) .037" Thick	26405PT (LH) 26406PT (RH) .047" Thick
Gasket Coverage (ink stamped on gasket):	"STD THK COVERS GRADES A - B - C - OVERBORE"				"OVERBORE + .010" THK"
TORQUE SPECIFICATION:	M12 Bolt - 1st Step: 50 Nm (37 lb. ft.) 2nd Step: 80 Nm (59 lb. ft.) 3rd Step: 60 Degrees 4th Step: 60 Degrees M8 Bolt - 25 Nm (18 lb. ft.)				

Figure 1

Multi-layer steel construction is the one common characteristic of all five OE head gasket versions. Beyond the proven benefits of MLS technology, however, things get a lot more complex. GM and Isuzu have used two different MLS designs over the years: the first, from 2001-04 model years; then another for 2005 and newer engines. Within each of these base designs are three additional gasket grades or thickness. To further complicate matters, engine professionals also must choose from two separate gasket thicknesses for engines that have either been overbored or overbored and deck milled. To help the engine professional identify these gasket variations, the OEM uses a "hole" and "slot" system. (See fig. 1)

SOLUTION: FEL-PRO® PERMATORQUE®MLS REPLACEMENT HEAD GASKETS 2 THICKNESSES COVERING ALL REPAIR NEEDS

This new lineup not only helps the engine professional save time & prevent confusion, but also incorporates exclusive features that address the unique requirements of the aftermarket repair environment.

Federal-Mogul Motorparts now offers two designs of Fel-Pro PermaTorque MLS gaskets that cover all grades for all repair needs for 6.6 Duramax turbo diesel engines.



FEL-PRO #26401PT (LH) AND 26402PT (RH)

Accommodate all model years as well as OE grades "A," "B" and "C" and overbored blocks

These Fel-Pro PermaTorque®MLS replacement head gaskets feature several design and material enhancements that are unavailable through OE or other aftermarket replacement gaskets:

- **Exclusive blue aftermarket MLS coating**
Accommodates 60 Ra and smoother surface finishes for superior sealability
- **LaserWeld™ stopper layer**
Seals the peak cylinder pressures often encountered in these engines
- **Dyno-proven design**
Each Fel-Pro PermaTorque MLS gasket must pass exhaustive dynamic testing in Federal-Mogul Motorparts' dyno lab before release to the aftermarket

26401PT
\$79⁰⁰

26402PT
\$79⁰⁰

26405PT
\$99⁰⁰

26406PT
\$99⁰⁰

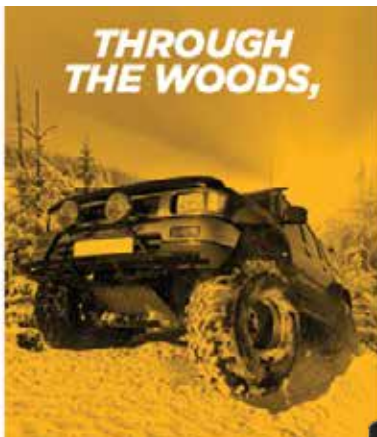


FEL-PRO #26405PT (LH) AND 26406PT (RH)

.010-inch thicker gaskets accommodate blocks that have been overbored and deck milled (all grades & model years)



WHETHER YOU
CAME OVER
THE RIVER,



THROUGH
THE WOODS,



OR JUST DOWN
THE STREET,



WE HAVE THE
RIGHT FILTER
FOR YOU.

Come
See Us!

BUMPER
TO
BUMPER

Auto Parts Specialists



(PMO)

HEAVY DUTY SAE ENGINE OIL



5 Gal.
PM5386

\$88⁰⁰

1 Gal.
53387

\$17⁵⁰

PIG Universal Mat — No mess, faster cleanups!

- Multiple layers of thermally bonded 100% polypropylene make PIG Mat the strongest mat on the market; **won't rip, tear or fray**, even when saturated
- Highly absorbent material traps liquids, so it **won't drip or leave behind fibers**
- **Safely absorbs and retains** oils, coolants, water, grease, gasoline, solvents, auto fluids, paint overspray, battery acid and most other liquids

PIG® Universal Absorbent Mat Pads

Item #	Weight	Size	Unit	Abs. Up To
25300	Medium	15"W x 20"L	100 pads	17 gal./box

PIG® Universal Absorbent Mat Rolls

Item #	Weight	Size	Unit	Abs. Up To
25201	Light	15"W x 50"L	1 roll	3 gal./roll
25400	Medium	30"W x 150"L	1 roll	32 gal./roll



New Pig
(PIG)



25300

\$109⁰⁰

Box

25201

\$32⁰⁰

Roll

25400

\$169⁰⁰

Roll

PIG Water-Repellent Mat — Soak up oil, not water.

- **Safely absorbs and retains** oils and oil-based liquids, lubricants and fuels, while repelling water; floats to clean up spills on water
- **Bright white color** makes oil stand out; draws attention to leaks and clearly shows saturation level of mat



26300

\$89⁰⁰

Box

PIG® Water-Repellent Oil-Absorbent Mat Pads

Weight	Item #	Size	Unit	Abs. Up To
Medium	26300	15"W x 20"L	100 pads	17 gal./box



Shaped to fit on drum tops to soak up pump drips and keep barrel tops clean.

PIG® Universal Drum-Top Absorbent Pads

Weight	Item #	Size	Unit	Abs. Up To
Light	25102	22" Dia.	5 pads	90 oz./box

25102

\$19⁹⁵

Pack

45300

\$59⁰⁰



Stash this kit behind or under your truck seat for fast spill response.

PIG® Universal Spill Kit

Mfg. Part #
45300 = Absorbs up to 5 gal.
Contents = 2 Socks + 20 Mat Pads + 1 Disposal Bag and Tie

RAVEN Nitrile Gloves (SAS)

- Made from 6-mil nitrile with textured grip and beaded cuff
- Offers superior puncture and abrasion resistance while providing outstanding strength, wear and dexterity.

66517 MEDIUM
66518 LARGE
66519 X-LARGE
66520 2X-LARGE

YOUR CHOICE **\$21⁵⁰**



STA-BIL® Fuel Stabilizer

(GLD)

22208
8fl. oz

\$7⁵⁰



22214
32fl. oz

\$18⁹⁵



BERGEN INDUSTRIES, INC. (CAL)

K4 & K5 Series Temporary High Bays



5 YEAR WARRANTY



\$139⁰⁰



\$89⁰⁰



\$119⁰⁰



\$159⁰⁰



\$229⁰⁰

MODEL	K4100	K5-30	K560	K5100	K5150
Watts	100	30	60	100	150
Voltage	100-277V	100-277V	100-277V	100-277V	100-277V
Lumens	12,000	4,050	8,100	13,500	20,250
Color Rendering Index (CRI)	80	80	80	80	80
Surge Protection	Up to 12,000V	Up to 6,000V	Up to 6,000V	Up to 12,000V	Up to 12,000V
Light Beam Angle	360°	360°	360°	360°	360°
Color Rating	5000K	5000K	5000K	5000K	5000K
Power Cord	35FT.	10FT.	10FT.	10FT.	10FT.
Daisy Chain Length	1FT.	1FT.	1FT.	1FT.	1FT.
Drive and Cage Material	Plastic & Steel	Plastic & Steel	Aluminum Die Cast & Steel	Aluminum Die Cast & Steel	Aluminum Die Cast & Steel
IP Rating	IP65	IP65	IP65	IP65	IP65
Indoor and Outdoor	✓	✓	✓	✓	✓
UL / OSHA Compliant	✓	✓	✓	✓	✓
Operating Temperature	-4F° to 122F° (-20°C to 50°C)	-4F° to 122F° (-20°C to 50°C)	-4F° to 122F° (-20°C to 50°C)	-4F° to 122F° (-20°C to 50°C)	-4F° to 122F° (-20°C to 50°C)
Rated Hours	50,000	50,000	50,000	50,000	50,000
Cord Gauge Size (AWG)	18/3	18/3	18/3	18/3	18/3
Dimensions (out of box)	11.4" x 6"	9.6" x 4.1"	12" x 6"	12" x 6"	12.6" x 6.5"

GB
REMANUFACTURING™

PREMIUM
GASOLINE & DIESEL
FUEL INJECTION PRODUCTS

GDI Injectors and Seal Kits

GDI equipped vehicles are now exiting factory warranty, providing a significant service opportunity for independent repair shops.

GB Reman has the most complete premium remanufactured GDI program in the industry.

- » All Injectors Meet or Exceed OEM Specifications
- » Industry Leading GDI Seal Kit Program
- » Import & Domestic Coverage
- » 100% Tested at Full Rated Pressure
- » 24 Month, Unlimited Mileage Warranty



PROUDLY REMANUFACTURED IN THE USA



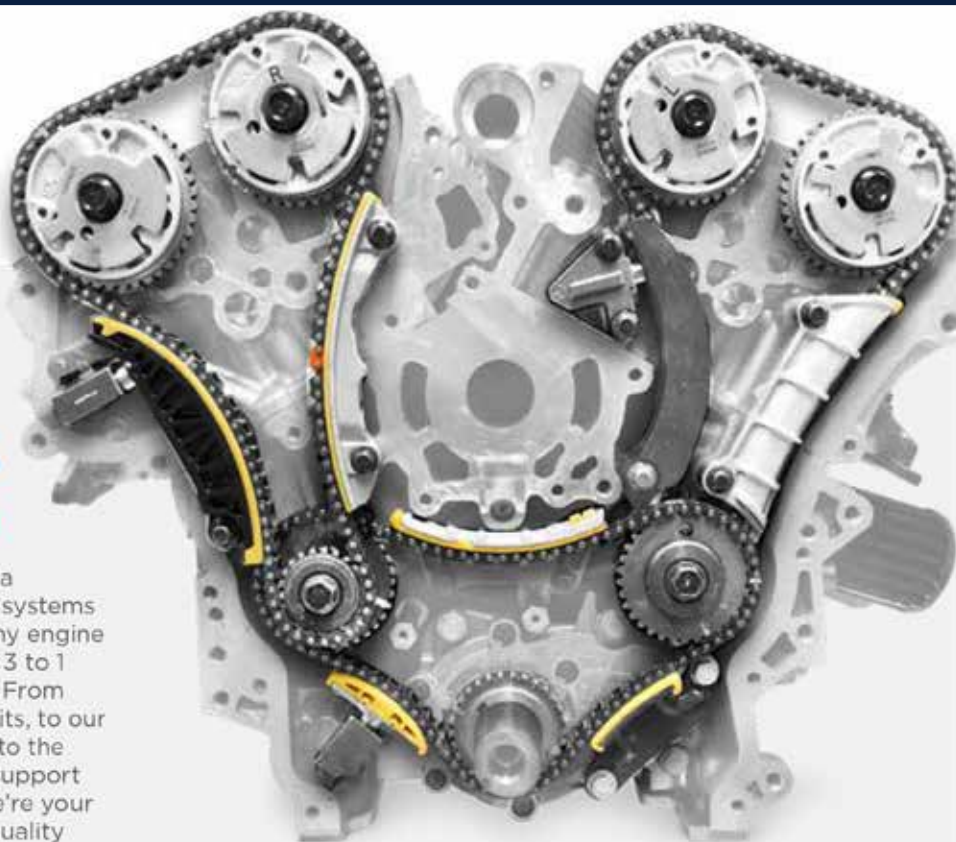
CLOYES TIMING KITS

YOUR COMPLETE TIMING AUTHORITY.

For 100 years and counting, Cloyes has built a reputation as a global leader in timing drive systems and engine components. There's a reason why engine builders prefer Cloyes 3 to 1 over the competition. From our complete timing kits, to our fully backed warranty, to the unmatched technical support our team delivers - we're your best source for high-quality timing kits that meet or exceed OEM performance.



cloyes.com



(RNX)

GLASS TREATMENT

- Restores headlights and clear plastic by removing haze and discoloration
- Try Rain-X Original Glass Water Repellent on your glass shower door and home glass windows for more water beading magic!
- Improves driving visibility and wiper blade performance

24.



800002242
3.5oz.

\$4⁹⁵



800002243
7oz.

\$6⁹⁵

PHILIPS

Automotive lighting

Grow your lighting sales!

Upgrade your customers' auto lighting with Philips upgrade headlight bulbs. They'll see what's ahead sooner and drive safer with up to **30%, 60%, and even 100% more vision.**



Philips Xenon HID is the choice of car manufacturers around the world, so you know you're getting Xenon HID **built to OE quality standards.**

innovation + you

philips.com/automotive



(LIS)

HUB REMOVER

Fits on most 5, 6 and 8 lug hub assemblies found on cars and trucks. Bolt the 1/2" thick driving plate to the hub using the hardened washers and existing lug nuts. Insert the hardened threaded forcing screw to push against a solid surface to loosen the hub assembly. To completely remove hub the forcing screw must push from a least two different solid points. Use the tool with caution, and do not push on only one solid point.



40100

\$109⁰⁰

50240 \$26⁹⁵ MAGNETIC FUNNEL HOLDER

Two strong neodymium magnets hold the funnel on ferrous metal surfaces without slipping. Holder collects residual fluids as they drain into 12oz. reservoir.



PNEUMATIC FAN CLUTCH WRENCH SET, 10 PC.

Set includes nine driving wrenches that fit Ford, GM, VW, BMW, Chrysler and newer International. Driving wrench sizes include: 7/8", 32mm, 36mm, 40mm Thin, 47mm, 1-7/8", 2", 52mm.

43350
\$179⁰⁰



**P.O. Box 15717
Little Rock, Arkansas
72231 - 5715**

PRSRT STD
US POSTAGE
PAID
LITTLE ROCK, AR
AR MAILING



(GMG)

LEDGE

PRIME PLUS WIFI- BLACK

\$899⁰⁰

Our new Prime grills just got even better with the same great Prime features PLUS a collapsible front shelf, interior grill light, rotisserie enabled mounting and stronger reinforced grates. Our Prime models are built even smarter and stronger. 12V direct power design provides better temp control, greater pellet fuel economy and faster startups! With micro-adjustment capability in the variable-speed fan and auger motor, you can maintain more consistent grill temps. With the grill and pellet view windows you can keep an eye on your food without letting your smoke escape and monitor your pellet supply. With a 13.5" peaked lid and 458 sq. in. of grill space this workhorse can cook anything from a dozen racks of ribs to a small whole hog and monitor multiple food temps with dual meat probes. Control and monitor your grill from your couch or on-the-go with GMG Smart Control. Adjust your smoke and grill temp from 150°F to 550°F with 5° increment control. Adjust and monitor your food temp from your phone with the GMG App. Grill smarter, eat better!



f BumpertoBumperAutoParts **ig BumpertoBumperAutoParts** **in bumper-to-bumper-auto-parts**



p Bumpertobum0116 **t Crowburlingame**

The products promoted in this publication are available at participating Bumper To Bumper Auto Parts Stores
Prices may vary at some store locations and are subject to availability.