

FARM DEALS

**BUMPER
TO
BUMPER**
Auto Parts Specialists
WWW.BTBAUTOPARTS.COM

February 1 Thru March 31, 2025



**Spring
Issue**

**We Have All The
Parts You Need
To Keep Farming!**



LED BATTERY-OPERATED MAGNETIC HAZARD LIGHT

- 6" X 4" Battery-powered LED flashing lights
- Magnetic mount attaches securely to back of vehicle or trailer
- 3-way switch for flashing or steady-on operation
- Requires four AA batteries(not included)

V316MA
AMBER
&
V316MR
RED



YOUR CHOICE
\$3500

LED WORK LIGHT

- 1900 lumens
- Wide spot pattern
- 3.25" x 4.75"
- Swiveling head can be mounted horizontally or vertically
- 10-40 VDC operating range
- Stainless steel mounting hardware
- IP67 rated



V919-MV

\$6900

LUMENX 4" ROUND LED WORK LIGHT

- 900 Lumens
- Flood pattern
- 4" Round, PAR 36 replacement
- Installed in durable, flexible rubber housing
- Low amp draw
- 9-16V operating range



V908

\$3900

GREAT WHITE LED PEDESTAL-MOUNT WORK LIGHT

- 1,350 lumens
- Compatible with both 12 and 24 volt systems
- High vibration resistance and low amp draw
- Cast aluminum body with heat-dissipating fins for durability and longevity
- 4.29" W x 6.1" T x 2.52" D



V910-MV

\$3500

ROUND TRACTOR LIGHT

- For use as utility, fifth wheel, back up, tractor or off road vehicle lamp



V507

\$2200



LED Square Worklamp

- 12-24VDC,
- 500 raw lumens



EW2403

\$5900



EW2461

\$7900

EW2461-CAMO

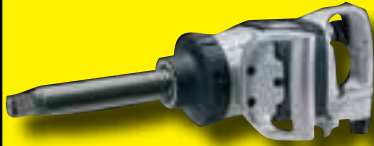
\$7900

Magnetic Rechargeable LED Worklamp

- 12-24VDC,
- 650 Raw Lumens
- 600 Effective Lumens



(ING)



1" Heavy Duty Extended Anvil

285B-6

\$995⁰⁰

- 1450 ft. lbs. of max torque
- High efficiency 6-vane motor
- 3-position power regulator
- 6" extended anvil

1/2" Heavy Duty Impact Wrench

- 375 ft. lbs. of max torque
- Handle exhaust
- Full power in reverse; adjustable power in forward



236

\$202⁰⁰

3/4" Impactool™

- Delivers 1050 ft. lbs. of max torque
- Two power settings in forward & reverse
- Variable speed trigger
- Handle-vented exhaust



259

\$620⁰⁰



(SUN)



SX556-6

\$620⁰⁰

1" Impact Wrench w/6" Ext. Anvil

- Produces 1600 ft. lbs. of ultimate torque
- Extended 6" anvil
- Three forward and three reverse power settings
- D-Handle design with side handle ensures operator control

3/4" Impact Wrench

- 1400 ft. lbs. of quiet power
- One hand forward/reverse
- Quiet Tech™ exhaust system delivers 90 dBA
- Weighs only 7.55lbs.



SX4355

\$635⁰⁰

Boss Brown Cotton Jersey Gloves (WST)



B61061-L
Large

\$179

Boss Black Boss Tech Premium Gloves (WST)



7820L
Large (SHOWN)

7820X
X-Large

\$399

Boss TACTILE Gloves, Knit Wrist Cuff (WST)



8445L
Large (SHOWN)

8445X
X-Large

\$699

Boss Gloves Flex Fit Glove (WST)



8412L
Large (SHOWN)

8412X
X-Large **\$449**



(MEC)

Mechanix Work Gloves Fastfit

MFF-05-009
Medium

MFF-05-010
Large (SHOWN)

MFF-05-011
X-Large

MFF-05-012
XX-Large



\$2199



(VMO)

CRIMSON™ GREASE

14oz. 10 Pack
Tubes
VV70124

\$49⁰⁰
Case



(LUC)

Red N'Tacky Grease

14oz. 10 Pack
10005

\$57⁰⁰
Case



(MYS)

JT-6® Hi-Temp Grease With Moly No. 2

14oz. Tubes,
10PACK

58305

\$59⁰⁰



JT-6® Multipurpose #2 Grease

14oz. Tubes,
10PACK

54845

\$47⁵⁰



JT-6® Hi-Temp Grease No. 2

14oz. Tubes,
10PACK

54385

\$51⁰⁰



JT-8® Synthetic Blend Oil

Your Choice!

\$38⁰⁰

13002 12892
2 Gal. 2 Gal.
15W-40 15W-50
(shown)



(SEF)

Deep Creep

Deep Creep breaks surface tension and cuts through corrosion and deposits of all kinds to loosen, lubricate, clean and protect parts and mechanisms.

DC-14
12OZ

\$8⁹⁹

SF-16
16OZ

\$8⁹⁹

Motor Treatment

Sea Foam is a 100 percent pure petroleum product, so it is as safe for seals, o-rings, sensors and other fuel system and engine components as the fuel or motor oil that runs the engine.



FILL-RITE

(FIL)

12V BARREL PUMP



FR1210H

\$519⁰⁰

- 12 volt with 15 ft. battery cables
- 15 GPM
- Includes hose & nozzle
- Engineered to exceed the industry's most stringent safety standards, the pump is constructed with thermal overload protection to prevent the motor from overheating during abnormal usage.

12V DC Bung Mounted Pump w/Hose & Nozzle



RD812NP

\$449⁰⁰

- Rotary vane high-flow fuel transfer pump designed for gas, diesel, biodiesel up to B20, kerosene, and E15
- 30-minute duty cycle with 8 GPM flow rate; 3/4-inch inlet and outlet with female NPT threads; Fuel pump with an aluminum and rotary vanes; Features a 1/5 HP motor; Smooth operating in-line switch; Thermally protected; Self-priming
- Includes pump, manual nozzle, 8-foot - 5/8-inch diameter hose with 3/4-inch fittings, 23 - 41-inch a telescoping suction tube, nozzle boot, bung tank mount adapter and 10-foot quick-connect power cord with alligator clips

12V HIGH FLOW PUMP



FR4210H

\$639⁰⁰

- High flow rate of 20GPM (76 LPM)
- Low 22 amp draw
- 1/4 HP, 12 volt DC motor
- Includes hose & nozzle



(JOE)

Hand Scrub Hand Cleaner

The same great formula as our all-purpose blend with the addition of a natural scrubber for deep, gentle cleaning of heavily soiled hands.



704KW
70 WIPES

\$18⁹⁵



401-P
4lbs. 5oz.
\$18⁹⁵



405
14oz
\$6⁵⁰



(WIL)

2 Ton Floor Jack



W1614

\$97⁰⁰

- 4,000 lb. capacity.
- Maximum height 15".
- Swivel casters for easy positioning.

2-1/4 Ton Trolley Jack w/Blow Case



W1611

\$106⁰⁰

- A durable flanged steel frame powder coated and assembled with rust-resistant hardware
- Steel lifting saddle, cleated for better load stability
- Heavy-duty steel front wheels and ball-bearing swivel rear wheels provide easy positioning
- Lift Range: 5-3/8 to 15-1/4 in.



(PSL)

13415D
\$45⁰⁰



FIRE EXTINGUISHER

This fire extinguisher from Shield Fire Protection contains 2.5 lbs. of ABC dry chemical, a multi-purpose extinguishing agent that is rated for use on three different classes of fires. This extinguisher is designed for use on common combustibles such as paper and wood, flammable liquids such as gas and petroleum oils, and safe to use on energized electrical equipment.

5 lbs. Pro 340 (Rating 3A:40BC) rechargeable unit with metal vehicle bracket DOT & USCG approved.

25614R

\$65⁰⁰



SUNEX[®] (SUN)
TOOLS

66037

\$395⁰⁰



3.5 TON SERVICE JACK WITH QUICK LIFT SYSTEM

- Rapid Rise Technology with dual pump pistons raises the saddle to maximum height in only six pump strokes
- Overload and bypass safety valves

3 TON ALUMINUM LIFT

- Lightweight Design for Racing Enthusiasts and Quick Performance Seekers
- RapidRise[®] Hydraulic Power Unit with Dual Pump Pistons



6603AJ

\$457⁰⁰

- Versatile Lift Height Range
- Thick Frame Side Plates and Reinforced Lift Arm
- Upgraded Power Unit with High Performance Seals and Hydraulic Fluid
- Overload and Bypass Safety Valves
- Maneuverability Enhanced by Swivel Caster Wheels and Wide Track Front Wheels

6 TON JACK STANDS

- Four legged steel base with pads for stability.
- Ductile iron support column with ratchet teeth provides multiple height positions.
- Self-Locking handle and pawl secure column in place.
- Large saddles with locating lugs provide support.



1006C

\$138⁰⁰

3 TON JACK STANDS

- Four legged steel base with pads for stability.
- Ductile iron support column with ratchet teeth provides multiple height positions.
- Self-Locking handle and pawl secure column in place.
- Large saddles with locating lugs provide support.

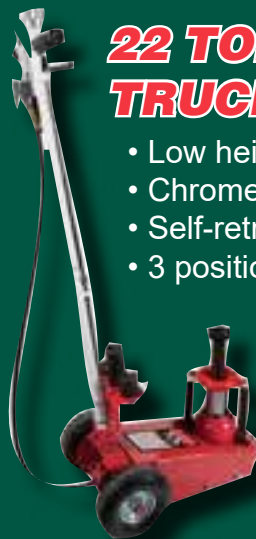


1003C

\$78⁰⁰

22 TON AIR/HYDRAULIC TRUCK JACK

- Low height 9" raised height 17"
- Chrome plated lift arm
- Self-retracting ram springs
- 3 position lock lever



6622

\$912⁰⁰

Forney

(FWP)



55861

**Valor ADF
Welding Helmet**



55731

**Easy Weld Black
Matte ADF
Welding Helmet**



55936

**PRO Camo ADF
Welding Helmet**

Torch Kit



1705



71877

**Grinding Wheel
with 7/8" Arbor,
4-1/2" X 1/4"**



71986

**Flap Disc, Blue Zirconia
with 7/8" Arbor, 4-1/2",
60-Grit**



71866

**Chop Saw Blade
with 1" Arbor,
14" X 3/32"**



261

**Easy Weld 140 FC-I Mig
Machine, 120V, 140 AMP.**



**Easy Weld Multi
Process Welder
140 Amp
271**



251

**Easy Weld 20P
Plasma Cutter**



**Battery Jumper Cables,
Heavy Duty, #4,
20-Foot
52867**



**16-Foot
52866**

**Battery Charger
Clamps**

54722



**Wire Scratch Brush,
10-1/4" X .014"**

70505



Check Your Local Bumper To Bumper Store For Pricing!



(PMO)

15W-40 • 6 Gal. Box
879394

\$109⁰⁰

15W-40 DIESEL MOTOR OIL

Parts Master Heavy Duty Motor Oil is designed to provide advanced lubricant performance in heavy duty diesel engines.



(PMO)

MULTI-VEHICLE ATF

- Full synthetic fluid
- Reduces varnish and sludge formation
- Protects against wear
- Improves and maintains smooth shifting over long service intervals
- Provides excellent flow properties at low temperatures and greater film protection at high temperatures

1 QUART
884922

\$6⁹⁵
EA.

\$78⁰⁰
CASE (12)



MAXLIFE MULTI-VEHICLE ATF (FULL SYNTHETIC)

- Full synthetic base oils and long-life friction modifiers help improve smooth shifting, eliminate slippage and shudder, prevent clutch wear and improve drivability longer than conventional fluids.



(VMO)

1 Quart
VV3246

\$8⁹⁵



6 Quarts
VV3246

\$51⁰⁰
CASE (6)

JT-7® MULTI-PURPOSE GEAR LUBRICANT 80W-90

- A specially balanced additive provides thermally stable gear lubricants with exceptional durability under high temperature conditions.

5 Gal.
16171

\$109⁰⁰



(MYS)

JT-7® MULTI-PURPOSE GEAR LUBRICANT 85W-140

- A specially balanced additive provides thermally stable gear lubricants with exceptional durability under high temperature conditions.

5 Gal.
16181

\$109⁰⁰

Check Your Local Bumper To Bumper Store For Pricing!

ATF DEX III



GEAR OIL

(LUB)

85W-140
5 GAL.
12572



DEX III
5 GAL.
12502



5 Gal.
12646



5 Gal.
12668



5 Gal.
12632

**Heavy Duty
AW-46
Hydraulic Oil**

**Heavy Duty
AW-68
Hydraulic Oil**

**Heavy Duty
AW-32
Hydraulic Oil**



5 Gal.
12656



5 Gal.
12629



5 Gal.
12652

**Premium Tractor
Hydraulic &
Transmission Oil**

**GL 5
80W90
Gear Oil**

**Tractor
Hydraulic &
Transmission Oil**



(SCO)

58310
50 Wipes

\$1550

**Shop Wipes
& Towels**

75190
200 Towels

\$1975



EUROW (ERW)

NEW!

Eurow Collapsible Bucket

This easy-to-use 10 liter (2.6 gallon) collapsible bucket is made of PP and TPR plastic material, making it watertight and great for many uses. It is ideal for outdoor or indoor use and for activities such as car washing, mopping, or even as storage. The handle makes it easy to carry and once you're done using it, compress the bucket and watch it collapse into itself for easy, compact storage. When needed, the bucket opens and locks in place.



EUCBU000

\$9⁹⁵



(TMX)

PADLOCK

- 1" x 1/4" Dia. Shackle – Dual Locking 40mm Solid Steel Laminated Padlock

TLM100
\$7⁹⁵



TPC125

\$29⁹⁵

COMBINATION PADLOCK

- 1-1/4" x 5/16" Diameter Shackle – Re-settable Combination Padlock

ROUND PADLOCK

- 10mm Shackle – Stainless Steel 70mm Round Padlock



TRP170

\$16⁹⁵

PADLOCK

- 1-1/2" x 7/16" Dia. Shackle – Dual Locking 65mm Solid Steel Laminated Padlock

TLM2150
\$18⁹⁵



TPL275L
\$18⁹⁵

HARDENED STEEL PADLOCK

- 2-1/4" x 10mm DIA. Shackle – Square 50mm Hardened Solid Steel Pad Lock (Re-Keyable)



(BER)

TIRE SEAL - R

1308
8oz.

\$5⁹⁵



1332
320z.

\$12⁹⁵



1301
1Gal.

\$38⁹⁵



PIG Water-Repellent Mat — Soak up oil, not water.



New Pig (PIG)



- Safely absorbs and retains oils and oil-based liquids, lubricants and fuels, while repelling water; floats to clean up spills on water
- Bright white color makes oil stand out; draws attention to leaks and clearly shows saturation level of mat



26300

\$89⁰⁰

PIG® Water-Repellent Oil-Absorbent Mat Pads



Weight	Item #	Size	Unit	Abs. Up To
Medium	26300	15"W x 20"L	100 pads	17 gal./box



25102

\$19⁰⁰

Shaped to fit on drum tops to soak up pump drips and keep barrel tops clean.

PIG® Universal Drum-Top Absorbent Pads



Weight	Item #	Size	Unit	Abs. Up To
Light	25102	22" Dia	5 pads	90 oz./box

PIG Universal Mat — No mess, faster cleanups!

- Multiple layers of thermally bonded 100% polypropylene make PIG Mat the strongest mat on the market; **won't rip, tear or fray**, even when saturated
- Highly absorbent material traps liquids, so it **won't drip or leave behind fibers**
- Safely absorbs and retains oils, coolants, water, grease, gasoline, solvents, auto fluids, paint overspray, battery acid and most other liquids

\$24⁰⁰



25201



Stash this kit behind or under your truck seat for fast spill response.

45300 **\$69⁰⁰**

PIG® Universal Spill Kit



Mfg. Part #
45300 • Absorbs up to 5 gal.
Contents • 2 Socks • 20 Mat Pads • 1 Disposal Bag and Tie

PIG® Universal Absorbent Mat Pads



Item #	Weight	Size	Unit	Abs. Up To
25300	Medium	15"W x 20"L	100 pads	17 gal./box

25400

\$169⁰⁰

PIG® Universal Absorbent Mat Rolls



Item #	Weight	Size	Unit	Abs. Up To
25201	Light	15"W x 50'L	1 roll	3 gal./roll
25400	Medium	30"W x 150'L	1 roll	32 gal./roll

25300

\$109⁰⁰



Engine Coolant System Pressure Tester **MOTORAD**®

(MTA)

- This tester ensures an automotive cooling system is operating at the correct pressure for optimal performance.
- Designed to not only test the system, but also coolant caps. Over time, coolant cap seals, springs and valves can wear out causing a loss in system pressure.



MT300

\$109⁰⁰



(TEC)

PermaCure Passenger Kit

- The Permacure Passenger Kit contains
- 25 each of the #220 and #222 Permacure repairs,
 - one 7 oz bottle of Flow Seal Vulcanizing Fluid,
 - one 2 mm wrench,
 - one #915 spiral cement tool,
 - one #925 Permacure passenger tool
 - one split eye replacement needle for the Permacure passenger tool.

215

\$99⁰⁰



10.

**20V Powerluber
Cordless Grease Gun,
Double Battery**

1884
\$498⁰⁰



LINCOLN (LIN)



**PowerLuber 20 Volt
Lithium Ion Professional
High Pressure 2 Speed
Cordless Grease Gun**

1888
\$459⁰⁰

**20V Field
Charger**

1875A
\$93⁰⁰



**Air Operated
Grease Gun**

1162
\$119⁰⁰

**Heavy Duty Pistol
Grip Grease Gun**

1134
\$69⁰⁰



**Lever Action
Bucket Pump**

G400
\$59⁰⁰



**Guardian
Standard,
Lever-Action
Grease Gun**

G100
\$21⁰⁰



Lever Grease Gun

1147
\$49⁰⁰



**Guardian Heavy Duty
Pistol Grip Grease Gun W/ 18"
Flex Hose**

G113
\$35⁰⁰



Powerlock Coupler

5900
\$47⁰⁰



Contour Beam Blade

ANCO® Contour® premium beam blades feature an infinite amount of pressure points for better blade-to-windshield contact. These blades feature our patented Articulated Contact™ Technology, proprietary KwikConnect® Installation System, and exclusive Duraklear® Plus rubber compound - making ANCO® Contour the premium upgrade beam blade replacement.



11.

SEE BUMPER TO BUMPER STORES FOR PRICING!

PRO-LOGIX^(SLR)

THE BATTERY CHARGER FOR TODAY'S SHOP
Automatic • Versatile • Beneficial • Safe

**HD Booster Pac
1500 Peak Amp 12V
Jump Starter
ES5000**

\$158⁰⁰



**Truck Pac HD
Jump Starter
ES6000**

\$373⁰⁰

**1.5 AMP
On-Board
12V Charger
1002**

\$44⁰⁰



**Jump-N-Carry
1700 Peak Amp
12V Jump Starter**

JNC660

\$182⁰⁰



**6/12V
40/20/15A
4735**

\$215⁰⁰

**10/6/2 AMP
PL2310**

\$92⁰⁰



(ZKS) **YOUR CHOICE!** **\$37⁰⁰ea.**

Hose & Utility Jugs

- Includes Hose with Utility jug, unlike others.
- 5 gallon capacity
- Excellent storage, transport and transfer vessel for automotive, industrial and agricultural fluids.



S738830



S738833



S738831 **12.**

RAPTOR ^{upol}

TOUGH AND TINTABLE
PROTECTIVE COATING

(UPL)



RAPTOR Black Truck Bed Liner Kit

UV Resistant - Will not fade. Scratch and stain resistant. Helps deaden sounds and vibrations. Rapid drying - Spray 2nd coat within an hour. High adhesion. Flexible.

UP0820

\$18900

UP0821

\$18900



RAPTOR Tintable Truck Bed Liner Kit

4 Liter Tintable 2.6 VOC Compliant Kit; Each kit contains four 750ml bottles of RAPTOR and one 1L tin of hardener. Each kit covers approximately 125 square feet, enough to do a full size pick-up truck bed.

PICK A COLOR \$26⁰⁰

RAPTOR Color is a concentrated tint for use with RAPTOR Tintable Protective Coating. Mix RAPTOR Color with RAPTOR Tintable Base to give a rich, UV resistant color that won't fade even after years in the sun.

UP4854 WHITE / BLANCO 2K	UP4858 LIGHT BROWN / MARRÓN CLARO	UP4862 LIGHT GREEN / VERDE CLARO	UP4866 YELLOW / AMARILLO
UP4855 LIGHT GRAY / GRIS CLARO	UP4859 SEPIA BROWN / MARRÓN SEPIA 2K	UP4863 GREEN / VERDE	UP4867 ORANGE / NARANJA
UP4856 BASALT GRAY / GRIS BASALTO 2K	UP4860 BLUE / AZUL 2K	UP4864 PINE GREEN / VERDE PINO	UP4868 FLAME RED / ROJO FUEGO 2K
UP4857 BEIGE / BEIGE	UP4861 NAVY BLUE / AZUL MARINO	UP4865 OLIVE GREEN / VERDE OLIVA 2K	



(PCL)

BRAKE & PARTS CLEANER

0734
140Z.

Perfect Stop Brake Cleaner

Your Choice 0265
13.5oz.

\$4200
Case(12)



(LUC)

UPPER CYLINDER LUBRICANT WITH INJECTOR CLEANER AND FUEL CONDITIONERS

Your Choice

\$12600
Case



10013
1 GALLON
(4 CASE)

10003
1 QUART
(12 CASE)



(GLD)

AMERICA'S #1 ETHANOL TREATMENT

TREAT YOUR FUEL WITH RESPECT

Others don't but we do
with STA-BIL® Fuel
Treatments for any
size engine.



Treatment
For Storage

22208
8 OZ.

\$6⁹⁹



Treatment Against
Ethanol-Blended Fuels

22264
10 OZ.

\$7⁹⁹



Treatment For
Marine Engines

22239
8 OZ.

\$9⁹⁹



(PCL)



AIR BRAKE ANTIFREEZE

- Protects air lines from moisture and freezing
- Air dryer and rust/corrosion inhibitor
- High purity formula provides protection to system components



5601
1 GAL.

\$19⁹⁹



5632
32 OZ.

\$4⁹⁹



**3400 PSI
CLEAN MACHINE
PRESSURE
WASHER**

- 2.5 GPM
- CRX 210low oil shutdown engine
- 25" x 5/16"high pressure hose

(COL)

61083

\$425⁰⁰



(DUR)

**Car Wash
Concentrate**



1Gal
902

\$29⁹⁵



16 fl.oz.
901

\$6⁹⁵



**Spray
Nine**

(PER)

- Kills bacteria and viruses in 45 seconds
- Professional-strength cleaner and disinfectant to power off tough soils fast

26832
1 QUART

\$2⁴⁹ Each

Or

\$45⁰⁰ Case (12)

26801
1 GALLON

\$7⁹⁵ Each

Or

\$34⁰⁰ Case (4)



(POW)

**Grease Buster
Concentrated
Cleaner/
Degreaser**

5Gal
42245

\$89⁰⁰



(HOL)

**THE ULTIMATE
DEGREASER**

B3
1 GAL.

\$11⁵⁰ ea.

B6
5 GAL.

\$47⁰⁰ ea.



BC12
55 GAL.
CONCENTRATE DRUM

\$249⁰⁰ ea.



(PCL)

**Purple Cleaner
Degreaser**

1Gal (Shown)
1340

\$7⁹⁵

5Gal
3405

55 gal.
34055 **\$36⁰⁰**

\$295⁰⁰





(HOW)

Howes 'Diesel Treat'

Diesel Conditioner and Anti-Gel

- Prevents diesel fuel from gelling.
- Safely removes water from diesel fuel.
- Contains no alcohol or other harmful solvents
- Cleans and lubricates fuel injectors.
- Eliminates smoking and rough idle.
- Safe and effective in all diesel and biodiesel blends to B-20.

103062
1 QT.

\$12⁷⁵

103060
1/2 GAL.

\$19²⁵



(RAD)

PENETRATING OIL



110Z.
L1-12

\$6⁷⁵
Each

Or

\$75⁰⁰
Case(12)



(MRV)

Marvel Mystery Oil

- Marvel reduces and prevents varnish and gum build-up, two key contributors to robbing engine performance.
- When added to engine oil, Marvel reduces and prevents valve sticking and clatter by breaking down harmful deposits of carbon and sludge.

012
16oz.

\$6⁹⁵



014
1 Gal.

\$34⁹⁵



25219
PUMICE
1Gal.

\$18⁵⁰

23218
SMOOTH
1Gal.

\$18⁵⁰



CYLINDER LUBRICANT & INJECTOR CLEANER

(LUC)

10020
5.25oz.

Two For
\$8⁰⁰



CHAMPION®

(CAC)

HGR7-3H
\$4015⁰⁰

R-Series Gas Powered Two Stage Piston Air Compressor

- 13HP
- 30 Gallon tank
- Gas Powered
- 175PSI



HGR7-3K
\$3830⁰⁰

GAS POWERED AIR COMPRESSOR

- 14HP electric start, Kohler engine
- 23:2 CFM @ 175 PSI
- 30 gallon ASME horizontal tank

FS = FACTORY SHIP

7.5HP 230V 1 PHASE ADVANTAGE

- 7.5 HP - 80 Gallon
- 230 volt/ single phase
- Low Oil Motor
- Auto Tank Drain
- Magnetic Starter
- Vibration Isolators



VR7F-8
\$4490⁰⁰



Powermate

(COL)

30 Gallon Oil-Free Direct Drive Air Compressor

- Low maintenance, oil free, direct drive
- Patented pump design
- 155 PSI Max pressure
- Automatic thermal overload protection
- 120V

DXCMLA1983012

\$705⁰⁰

Amflo

(TRU)

Ultra Air Premium Hybrid Air Hose



575-50A

\$329⁵

PT Performance Tool

(WIL)

5 Gallon Air Tank

- 125 PSI maximum.
- Light weight, portable.
- Safety pressure bypass valve with manual override.



W10005

\$64⁰⁰

2" Round Dial Tire Pressure Gauge

W9106

\$87⁵

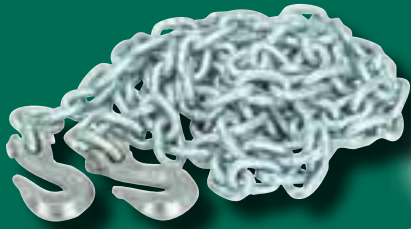




PEERLESS
INDUSTRIAL GROUP

(PLC)

CHAIN WITH HOOKS



16' - 3/8"

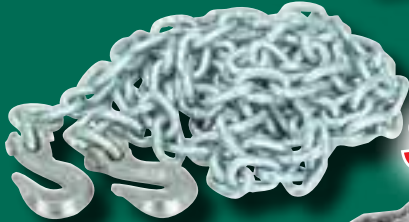
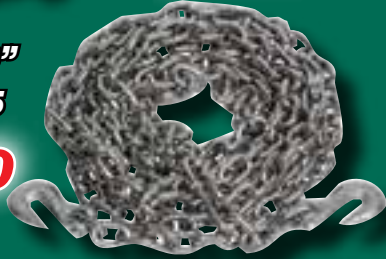
5262163

\$95⁰⁰

16' - 5/16"

5261155

\$75⁰⁰



25' - 3/8"

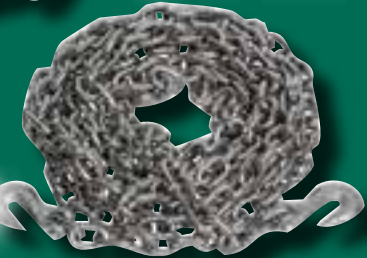
5262463

\$145⁰⁰

25' - 5/16"

5261463

\$115⁰⁰



BARRICADE FUEL LINE HOSE

27313



27313

25FT

Inside

Dia:1/4"

1 Roll (25FT)

\$59⁰⁰

27314

25FT

Inside Dia:5/16"

1 Roll (25FT)

\$59⁰⁰

27315

25FT

Inside Dia:3/8"

1 Roll (25FT)

\$69⁰⁰

(GAT)



27478

\$39⁰⁰

Charter Air Hose

ID: 3/8", Length: 25', 200psi
Coupling Thread Size: 1/4-18NPT

Charter Air Hose

ID: 3/8", Length: 50', 200psi
Coupling Thread Size: 1/4-18NPT

27479

\$69⁰⁰



Safety Stripe Air Hose

ID: 3/8", Length: 25', 300psi
Coupling Thread Size: 1/4-18NPT

27488

\$39⁰⁰

Safety Stripe Air Hose

ID: 1/2", Length: 25', 300psi
Coupling Thread Size: 1/2-14NPT

27491

\$49⁰⁰

Safety Stripe Air Hose

ID: 1/2", Length: 50', 300psi
Coupling Thread Size: 1/2-14NPT

27492

\$109⁰⁰



[f BumpertoBumperAutoParts](#) [BumpertoBumperAutoParts](#) [bumper-to-bumper-auto-parts](#)
[Bumpertobum0116](#) [Crowburlingame](#)

The products promoted in this publication are available at participating Bumper To Bumper Auto Parts Stores
Prices may vary at some store locations and are subject to availability.